

# Screening Solutions for Epidemic Prevention





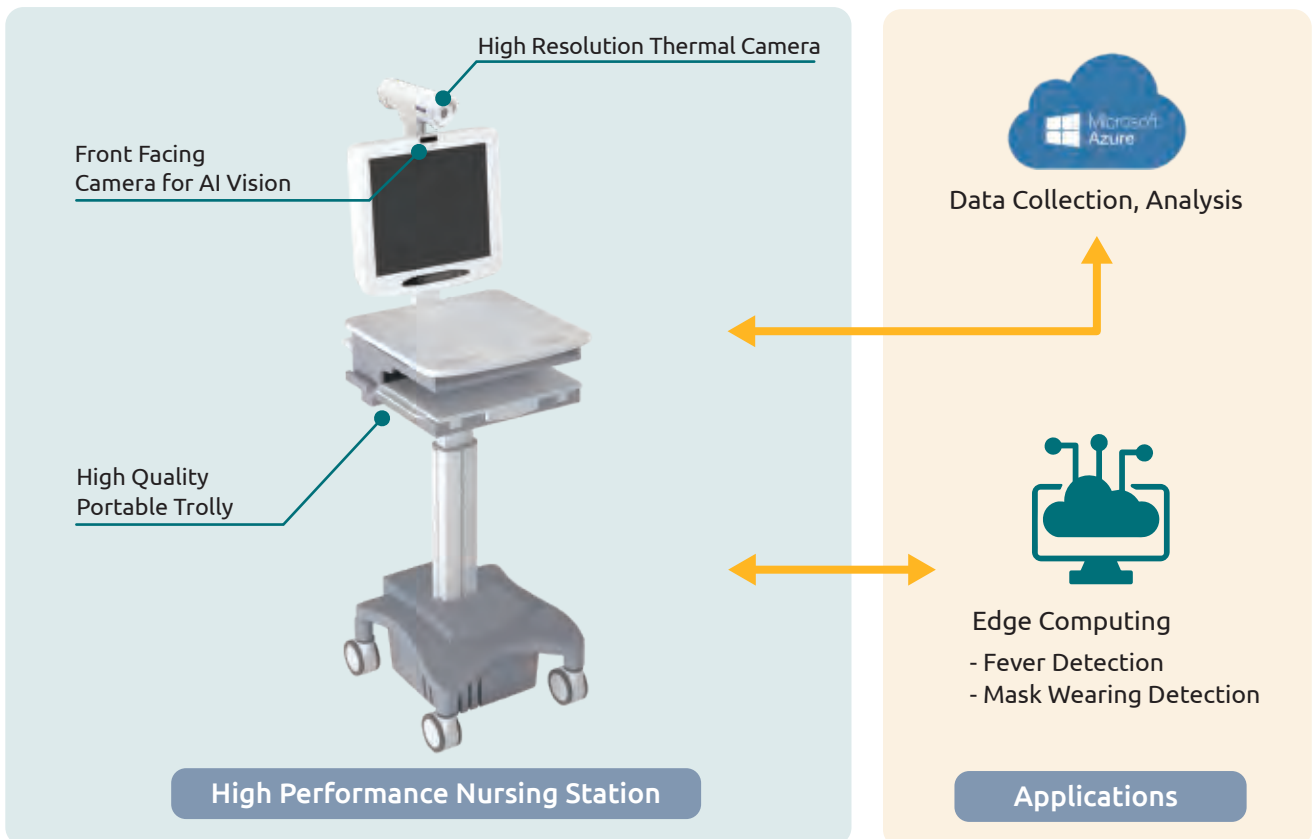
ARBOR

# Portable Temperature & AI Mask Wearing Screening Station

Fever detection and AI Vision recognition to determine if the person is safe to be allowed into the building. If a fever is detected, or a mask is not being worn, the person is not allowed to enter the building.



Green: Wearing Mask    Red: Not Wearing Mask





**ARBOR**

# Preliminary Fever Detection

## E-Guardian S408

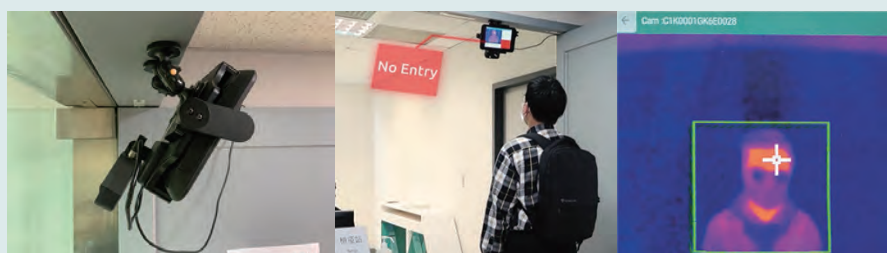
### Fast and Advanced Thermal Imaging for Epidemic Prevention

- High accuracy, error margin of  $\pm 0.5^{\circ}\text{C}$
- Real-time thermal image
- 8" inch tablet as HMI, easily viewable result
- Warning graphic and sounds



### Easy Installation, Setup and Optimization

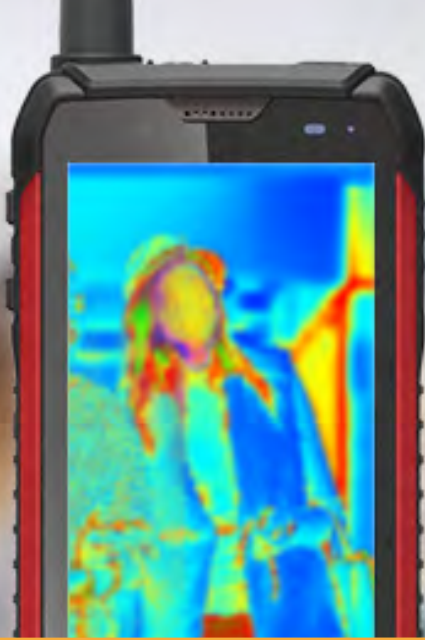
- One stop fever detection total solution
- Combine thermal imager with HMI
- Adjustable angle for maximum flexibility
- High accuracy detection with blackbody



### Reduce Physical Contact, Keep Safe Social Distance

- Thermal imager can help reduce physical contacts on screening
- Easy installation and calibration process, suitable for different applications
- Advanced fever detection Software is included
- Intuitive user interface, touch screen and physical buttons

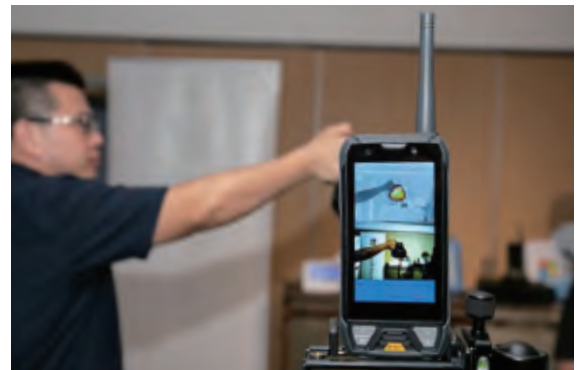




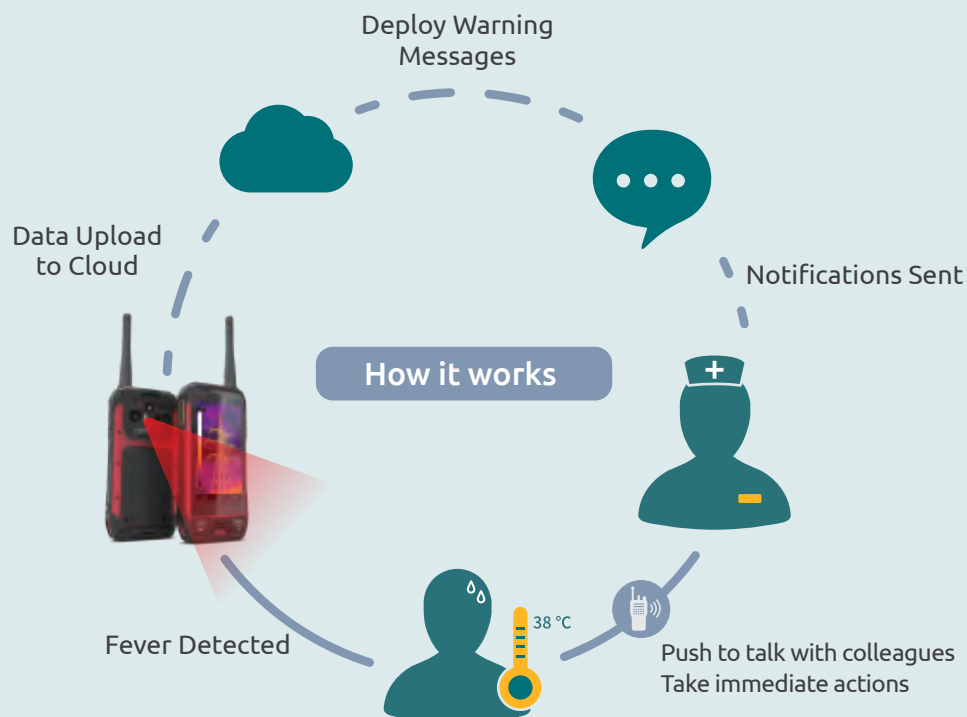
ARBOR

## Handheld Temperature Screening Solution

AMobile's rugged handheld with thermal imager, health professionals can detect temperature on the go.



- Wireless Connectivity with Wi-Fi, 3G/4G
- Thermal Imager
- Built-in Walkie Talkie
- Rugged, Explosion Proof

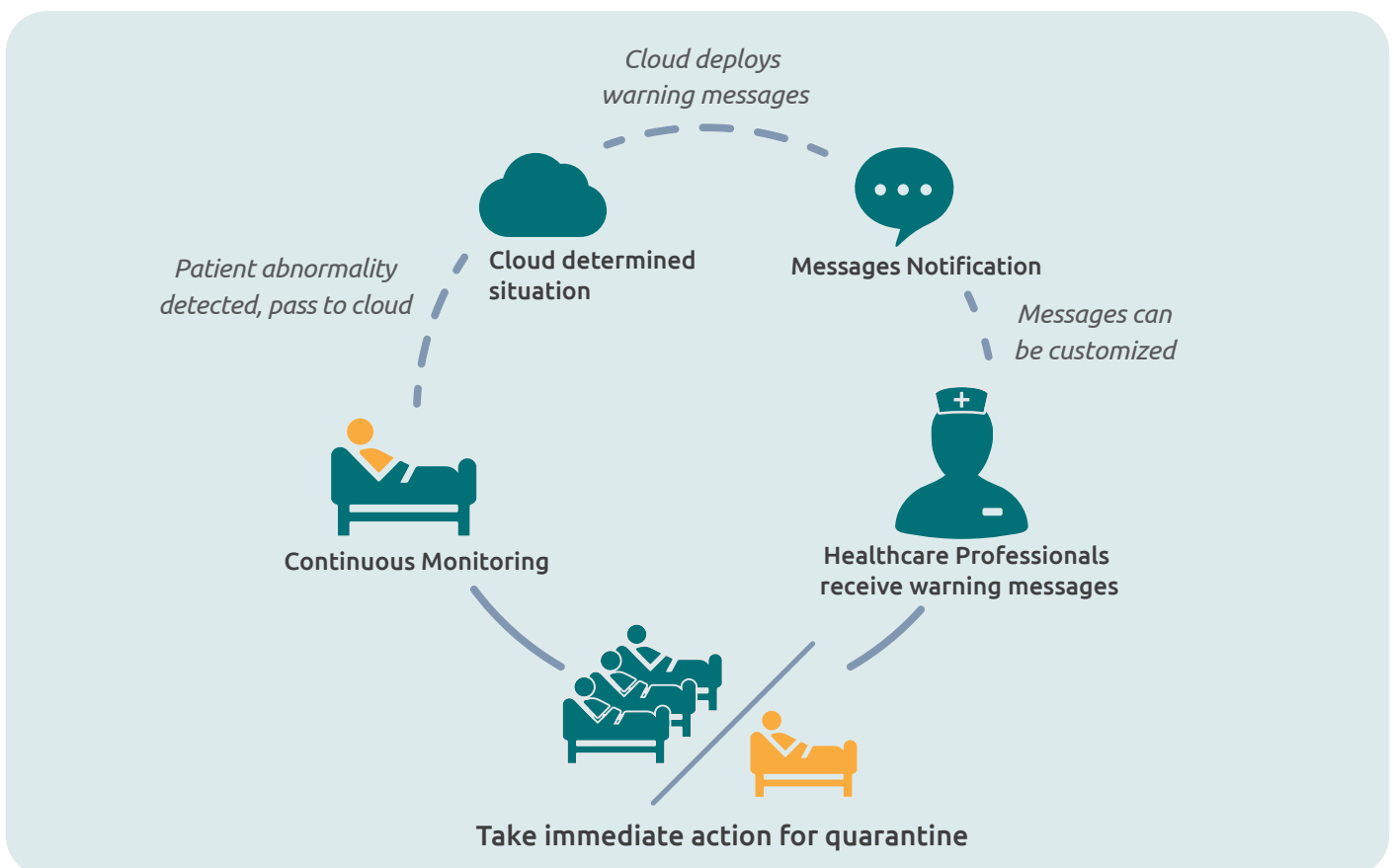




**ARBOR**

# Continuous Temperature Monitoring Solution

- Continuous monitoring for temperature and heart rate, provides real time notifications for professionals to take immediate action
- Continuous monitoring provides health condition data for better staff management



# Portable Temperature & AI Mask Wearing Screening Station

## E-Guardian S1923



### Features

- Fanless Design
- Applicable for clinical station, nursing and PACS
- Soldered on board 7th Gen, Intel® Core™ i5-7442EQ processor
- 19 inch LCD with resistive touch
- IEC & EN 60601-1 (Edition 3.1), IEC & EN 60601-1-2 (Edition 4th) certified
- Streamline appearance - 59mm in thickness
- Multi-connectivity (Bluetooth, WLAN and GbE)
- RFID & NFC reader, 5.0 MP camera, dual smart card readers, and slim DVD-RW
- Optional alternative of external battery or PCIe x16 expansion box
- Isolated serial ports, USB and Lan ports
- Multi-expansion (3 x RS-232, 5 x USB, 2 x LAN, 1 x DisplayPort and 1 x SD Card)

System	
CPU	Soldered onboard 7 <sup>th</sup> Gen. Intel® Core™ i5-7442EQ 2.9GHz processor
Graphics Controller	Intel® HD Graphics 630
Memory	4GB DDR4 SO-DIMM memory module installed
Storage	128GB M.2 2280 PCIe Gen3 SSD 2.5" 80GB SSD (optional)
Peripherals and Devices	
Thermal Camera	1 x FLIR A315 thermal imaging camera (temp. range -20~120°C, 320 x 240 px)
Camera	1 x 5.0 MP front facing CMOS camera with auto-focus (optional)
WLAN & Bluetooth	1 x WLAN 802.11 a/b/g/n & Bluetooth 4.0 LE, class 2
RFID & NFC	1 x 13.56MHz RFID & NFC reader with ISO 14443A/14443B/15693 support (optional)
Smart Card Reader	2 x Smart Card Reader slots
DVD-RW	1 x Slim DVD-RW (optional)
I/O Interface	
I/O	SD Card, Audio, Video output, Video input, LAN, Serial Port, USB Port
LCD Touch Screen	
Type	Analog Resistive Touch
Size/Type	19" TFT Active Matrix Panel
Max. Resolution	1280 x 1024 (SXGA) with 16.7M colors
Luminance	350 cd/m <sup>2</sup> (typ.)
Contrast Ratio	1000:1 (typ.)
Backlight Type	LED
View Angle (U/D/R/L)	80°/80°/85°/85° (typ.)
Power Requirement	
Adapter Input	100 ~ 240 VAC (full range)
Adapter Output	DC 18V, 5.55A, 100W with medical certificate
Battery Type	Li-battery pack
Battery Capacity	1 x 7800mAh 9-cell external battery pack (optional)
Mechanical & Environmental	
Operating Temp.	0 ~ 40°C (32 ~ 104°F)
Storage Temp.	-20 ~ 60°C (-4 ~ 140°F)
Operating Humidity	10 ~ 95% @ 40°C (non-condensing)
Dimensions (W x H x D)	450 x 400 x 59 mm (17.7" x 15.7" x 2.32")

Net Weight	7.5 kg (16.53 lb)
Vibration	5 ~ 500Hz, 1G random operation (SSD only)
Shock	10G peak (11m/sec)
Mounting	VESA-75 compatible (M4)
IP Rating	Compliance design with IP65 (front touch panel)
Operational Altitude	Below 2000m
Regulatory	CE, FCC Part 18 Subpart C IEC & EN 60601-1 Safety (Edition 3.1), IEC & EN 60601-1-2 EMC (Edition 4th)
OS Support	
Windows 10 IoT Enterprise LTSC Linux: Ubuntu	
Mobile Computing Cart	
Height Adjustment Range	907~1207mm
Work Surface	538 (W) x 449 (D) mm
Battery Compartment	197 (L) x 265(W) x 168 (H) mm
Caster	4 casters, 2 locking

# Preliminary Fever Detection

## E-Guardian S408



### Features

- Quick preliminary fever screening without contact
- HMI & thermal camera integrated all-in-one solution
- Intuitive user interface with touchscreen and physical buttons
- AI human recognition for accurate temperature measurements
- Blackbody & offset adjustment to enhance accuracy
- Slim design, easy deployment

System	
Measuring Distance	Quad-Core ARM Cortex-A53 1.0 GHz CPU
Accuracy	±0.5°C (@25°C)(after calibration to environment)
Offset Adjustment	On-screen adjustment, ±5°C
System Power	5V/2A
HMI	
HMI Display	8" Capacitive touch screen
CPU	Quad-Core ARM Cortex-A53 1.0GHz
OS	Android 7.0
Memory	3GB LPDDR2
Storage	16GB eMMC
Brightness	400 nits
Control	Reset button, Volume control
I/O	Micro USB (power connection) microSD card slot (max 64G) (for App upgrade)
LED	Power status LED
Thermal System	
Thermal Imaging	Lepton 2.5, on board
Spectral Range	Longwave infrared, 8µm to 14 µm
Array Format	80 x 60
Field of View	51° x 63.5° (H x D)
Power Jack	1 x 3-pin M8 power jack (IP67)
Button	Power button
LED	3-color LED; Pair, Link, Activity
Calibration	Blackbody, ±0.3°C
Blackbody Power	Power Input: DC5V/2.5A Power adapter: 5V/2.5A, 3M

Communication	
Wi-Fi	802.11 a/n/g/n
WiFi Antenna	Built-in dual band (2.4G/5G) chip antenna
Certifications	
Compliance	CE, FCC, NCC
Mechanical	
Dimensions	S408: 226.7 x 252.1 x 81.1 mm (W x H x D) Blackbody: 90 x 130 x 33 mm (W x H x D)
Net Weight	S408 w/o magnetic holders: 1.40 kg S408 w/ magnetic holders: 1.59 kg Blackbody: 0.81 kg
Working Temp.	15~30 °C
Storage Temp.	-10~50 °C
Package	
Contents	<ul style="list-style-type: none"> <li>• S408 (including Infrared camera, HMI, mounting plate, Y-power cable and 2 x magnetic holders, all preassembled)</li> <li>• Blackbody Calibrator, w/ power adapter</li> </ul>
Package Dimension	500 x 310 x 125 mm (L x W x H)
Weight	3.5 kg
Optional Accessories	Tripod for S408 (2.8M, standard 1/4" thread) Tripod for the blackbody calibrator (1.5M, standard 1/4" thread, HS368)

# Handheld Temperature Screen Solution

## E-Guardian S60



## Features

- High performance with Octa-Core ARM Cortex-A53 1.3 GHz CPU
- Rich wireless communications via WorldMode 4G LTE, PTT (Push-to-Talk), Bluetooth, WiFi, GPS
- Multi-data capture by thermal imaging, NFC, UHF (with UHF reader)
- High resolution images with 13M camera and HD display
- Long time operation up to 10hrs from the battery capacity of 5100 mAh
- Robust design with IP67 rating and 1.5m drop resistance
- High resolution images with 13M camera and HD display



System	
CPU	Octa-core ARM Cortex-A53 1.3GHz
Operating System	Android 5.x
Memory	2GB
Storage	16GB
Micro SD	Support SDIO 3.0 protocol( up to 32G)
Peripherals and Devices	
Camera	Front: 2M without AF Rear: 13M OIS with AF
Sensor	Gyroscope G-sensor M-sensor Light sensor Barometer Proximity sensor
Audio	Vibrator Receiver / Speaker Mic Headphone Jack FM Radio
Flash	YES
Torch	YES
OTG	YES
NFC	YES
PTT	YES
RFID	NFC Embedded / UHF Reader Option
Aimer	YES
Thermal	80 x 60 Pixel Scene Dynamic range:-10°C ~ 140°C Radiometric accuracy:Greater of ±10°C or 10%(typical)
* The thermal imager is to detect the temperature difference between the target and the surroundings. The temperatures are for reference only!	
Wireless	
WLAN/WiFi	802.11 a/b/g/n/ac
Bluetooth	Bluetooth 4.1+ HS
GPS/AGPS	GPS+Beidou(Default) ; GPS+Glonass(Optional)
Wireless	GSM/GPRS/EDGE (Band 900/1800) WCDMA (B1/B8) TDS-CDMA (B34/39) CDMA2000 (BC0) FDD-LTE (B1,B3) TD-LTE (B38,B39,B40,B41)

I/O Interface	
Cradle Interface	VIN 9V/USB D-/USB D+/GND/5V OUT/UART TX/ UART RX/ADC/USB ID/GND
SPI	SPI Interface
SIM card	SIM1 to MiniPCle SIM2 to MTK
Mini PCIE Interface	4G (data only)
Key	Power/+/-/SOS/UD1/UD2/UL/REC/CAM/PTT
LCD Display	
Size/Type	5"HD TFT
Resolution	720(W) x 1280(H)
Brightness (cd/m <sup>2</sup> )	500cd/m <sup>2</sup> (with TP)
Touch Screen	5 points capacitive touch (PCT)
Power Supply	
Battery Capacity	5100mAh
Charging Time	Up to 4hours
Cruising Endurability	8~10hrs
Mechanical & Environmental	
Operating Temperature	-10°C ~ 55°C
Storage Temperature	-20°C ~ 65°C
Dimensions(mm)	179 (H) x 87 (W) x 30(D) mm
Dimensions(mm)	181.7(H) x 87.2(W) x 30.9(D) mm 274.7(H) x 87.2(W) x 30.9(D) mm (with antenna)
Weight	531g



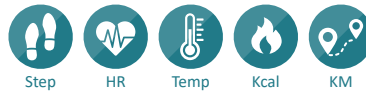
# Continuously Temperature Monitoring Solution

## E-Guardian S101



### Features

- Supporting Android and iOS system
- Monitoring body temperature and heartbeat in-time



#### Basic Parameter

Sealing Level Rate	IP68
Operating Temperature	-10°C~60°C
Storage Temperature	-20°C~70°C
Operating Humidity	10%-90%RH
Drop	1.5m
Weight	22g
Color	White

#### Platform

Chipset Supplier	Dailog
Chipset	DA14585
CPU Frequency	16MHZ ; 0.02W

#### Operating System

Operating System	Android 4.0
	iOS 8.0
Language	Multi-language

#### Memory

ROM	CPU RAM 96K CPU ROM 128K Flash 16M
RAM	96KB

#### Display

Type	OLED
Size	0.49 "

#### Touch Panel

Support	Yes
Type	Single Point

#### Connection Parameter

BT	BT4.2
WiFi	No
NFC	Yes
USB	POGO PIN USB

#### Sensor

G-Sensor	Yes
Gyroscope	Yes
Heart Rate	Yes
3D Accelerometer	Yes
Temperature	Yes

#### Expandable Storage

Support	Yes
---------	-----

#### Electric Acoustic Devices

MIC	No
Speaker	No
Motor	Yes
Receiver	No

#### Battery

Type	Li-polymer
Capacity	250mAh
Charging Method	POGO PIN USB

#### Other Partmeter

Keypad	No
LED Indicator Light	No
FOTA	OTA